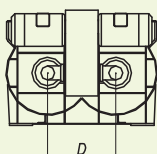
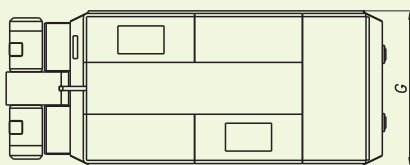
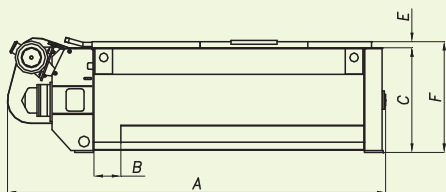


# MESCOLATORE CONTINUO A DOPPIO ASSE ORIZZONTALE TWIN SHAFT CONSTANT MIXER

*mixer* **XC** series



**XC 150 - 200 - 300**



## Configurazione standard

- ALBERI CON BRACCI SALDATO
- RIVESTIMENTI E PALE IN HARDOX 400
- COPERTURA STANDARD
- PROTEZIONIDI SICUREZZA SECONDO NORMATIVE "CE"
- SISTEMA INGRASSAGGIO CENTRALIZZATO CON POMPA ELETTRICA

## Accessori

- BRACCI BULLONATI

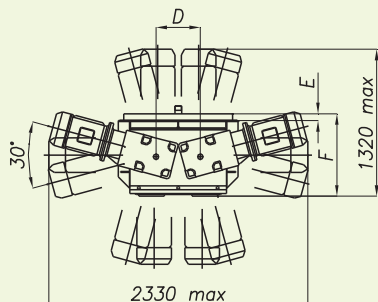
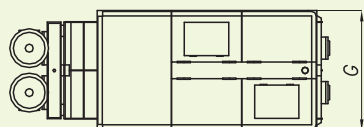
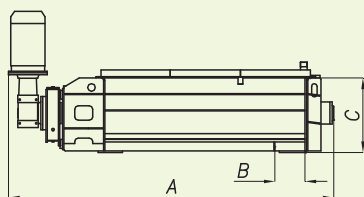


## Standard configuration

- WELDED MIXING ARMS
- INNER LINING AND MIXING BLADES IN HARDOX 400
- UPPER COVER
- SAFETY PROTECTIONS AS PER **ECC** REGULATION
- AUTOMATIC GREASING SYSTEM WITH ELECTRIC PUMP

## Accessories

- BOLTED ARMS



**XC 100**

TIPO TYPE	A	B	C	D	E	F	G
XC 100	2940	280	680	400	63	743	1080
XC 150	4215	330	1170	750	63	1233	1696
XC 200	4215	330	1170	750	63	1233	1696
XC 300	4180	330	1280	810	63	1343	1820

DESCRIZIONE DESCRIPTION	XC 100	XC 150	XC 200	XC 300
Produzione oraria (volume) Capacity per hour (volume)	m <sup>3</sup> 100	m <sup>3</sup> 150	m <sup>3</sup> 200	m <sup>3</sup> 300
Produzione oraria (peso) Capacity per hour (weight)	Ton 180-200	Ton 270-300	Ton 360-400	Ton 540-600
Motori mescolazione Mixing motors power	2x11 KW	2x18.5 KW	2x22 KW	2x30 KW
Numero pale di mescolazione No of mixing blades	52	48	48	48
Dimensione aggregati Aggregates size	mm 0-100	mm 0-120	mm 0-120	mm 0-120
Peso macchina a vuoto versione standard Weight empty mixer in standard version	Kg 2600	Kg 5300	Kg 5350	Kg 5700

