

Dealer/Distributor
FESCO Direct LLC
(800) 880-7350
www.fescodirect.com

SCALE-TRON

Perfecting the Art of Concrete Production

BatchTron-III

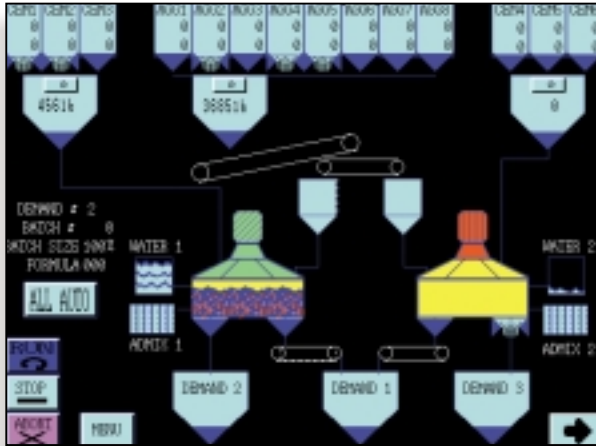
Dealer/Distributor
FESCO Direct LLC
(800) 880-7350
www.fescodirect.com

The most advanced batch controller - bar none

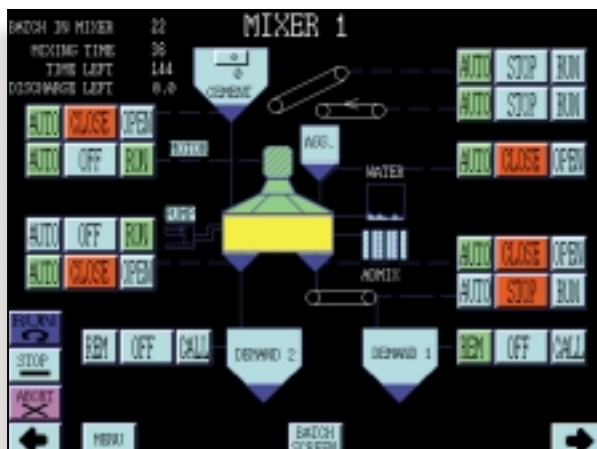
For the big plants with 2, 3 and more mixers, **BATCHTRON-III** is the ultimate controller. Its one, two or three big touch screens allow you to simultaneously view the whole plant operation and give you control that you never thought possible before.

Like its smaller siblings **BATCHTRON** and **BATCHTRON-II**, **BATCHTRON-III** uses touch screen and PLC technology to integrate all the batching functions into one integrated controller. Panel switches and lights are things of the past. Scale displays are built-in, and the power of the touch screen allows advanced options like mixer moisture control to be incorporated - no costly extra boxes to buy!

BATCHTRON-III is expandable. PLC inputs and outputs can be added to almost any number. Add more scales and ingredient feeders - add more touch screens. *You* tell us how high and *we* jump.



- Large 10.4" TFT touch screen, viewable from any angle, has capacity for 14 solid ingredients and 14 liquids on each touch screen. Add a second touch screen to allow up to 28 ingredients to be batched in up to 10 scales, and we don't stop there.
- Each touch screen has capacity for hundreds of "pages", each with plant controls, data displays or data menus.
- Mixer screens for each mixer allow control of all related processes, from loading to discharge and subsequent conveying.



- Two-screen system allows batching to be viewed on first screen while second shows mixing process. Both screens contain identical data, allowing a single screen to be used if the other should fail.
- Advanced functions such as bar and trend graphs available for moisture, temperature and motor power recording and control.
- Any part of the plant can be run manually while the rest continues automatically. Controls are customized to your exact plant needs and are fully interlocked to prevent accidents and lost time.
- Hundreds of alarm messages with audible horn warning, partial and full shutdown.

The most reliable batch controller - bar none

Because **BATCHTRON** uses just a PLC and touch screen, there are fewer parts to go wrong - and the parts are industrially hardened for 15 or more years of trouble free service. Forget the quirks of PC computer-based systems, the software bugs and continual obsolescence of their parts. PLCs for our 20 year old systems are still available, although we have never had one fail.

Since **BATCHTRON's** PLC handles all batching functions, these functions can be more tightly integrated to give you more flexible operation, and the elimination of communication between devices increases reliability.

Less downtime, more production.



Batchlink adds database power for reporting



BATCHLINK is the connection between **BATCHTRON** and computer. Batching statistics are transmitted to your office computer running Microsoft Access database (part of Office 2000), creating files for your use in management reporting. Batch reports, production and usage totals, inventory control and archiving are standard and we are adding new functions all the time. Because **BATCHLINK** uses the Microsoft Access database, it is easy to customize to your needs and expand to meet the demands of growth in the future. You are never locked in and you can be sure that it will never be obsolete.

- Your computer is not part of the batching system. It is not necessary to the batching operation and does not affect its reliability. It is the most convenient way of storing information and adds flexibility not found in other systems.
- Connect to a network to allow all management access to batch data, reports.
- Centralize records and store on tape or CDROM for security.

Dealer/Distributor
FESCO Direct LLC
(800) 880-7350
www.fescodirect.com

Dealer/Distributor
For the latest information, visit our Web site:
FESCO Direct LLC
www.scaletron.com
(800) 880-7350
or call us at 1-800-632-7083
www.fescodirect.com



Dealer/Distributor
FESCO Direct LLC
(800) 880-7350
www.fescodirect.com

Scale-Tron Inc.
116 West Service Road, Suite 128
Champlain, New York USA 12919
Telephone: 514-634-7083 • Fax: 514-639-6945
E-mail: scaletron@scaletron.com