

Models A & B

WATERDOG Automatic Water Shut-Off



You know this problem. You see it every day. Drivers overfilling their water tanks, leaving the mess in your yard.

The **WATERDOG** saves on

- ✓ City Water expenses
- ✓ Well maintenance costs
- ✓ Heated winter water
- ✓ Chilled summer water

Excess water

- ✓ Undermines your pavement
- ✓ Creates Ice hazards
- ✓ Tracks more dirt out of your yard on wet tires

You need the
WATERDOG Automatic Shut-off
from BFK Technologies.

It's the answer to your costly
overflow problems.

With more and more environmental issues facing you, doesn't it make sense to conserve your fresh water, and help minimize run-off?

And think of the expense. Wasted city water is paid for by the gallon. Wasted well water adds costs due to excess wear and tear on pumps and plumbing, causing premature failure and added maintenance costs.



BFK Technologies Inc.

For More Information
contact BFK Authorized
Dealer/OEM Rep:

FESCO Direct LLC
Call +1 (262) 349-9436
Email information@fescodirect.com
Visit online at www.FESCODirect.com

Model A

For use in plants with existing electrical controls, such as a pump start/stop station, or solenoid on/off (Well Water).

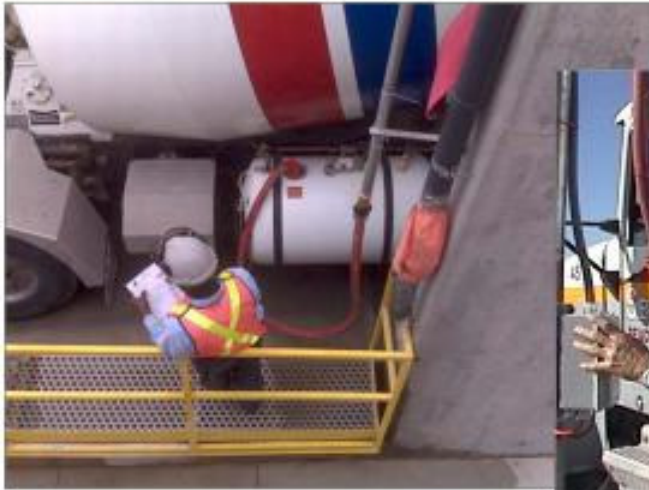
Model A includes:

- (1) Nozzle, 1-1/4" or 2", zinc and clear plated.
- (1) Model A Control Box, in NEMA 4X Enclosure, complete with pressure switch and terminal strip, 120VAC.
- (1) 20' length air line, 1/4"
- (6) Cable ties

Approx. Shipping Weight: 10#

NOTE: Existing start/stop station must include momentary and holding contacts. If a single phase pump is used with 2-wire control, a relay must be added with a start/stop station.

Right is reserved to alter specifications without notice.



Model B

For use in plants where no electrical controls currently exist, such as opening/closing a hand (ball) valve (City Water).

Model B includes:

- (1) Nozzle, 1-1/4" or 2", zinc and clear plated.
- (1) Model B Control Box, in NEMA 4X Enclosure, complete with Start/Stop switches, pressure switch, relay and terminal strip, 120VAC.
- (1) 20' length air line, 1/4"
- (6) Cable ties

Approx. Shipping Weight: 10#

Relay Rated 10A @ 120VAC, DPDT
Requires solenoid valve [sold separately]

Right is reserved to alter specifications without notice.

Simple, Compact, Efficient... now *that's* BFK. Focused.

For More Information
contact BFK Authorized
Dealer/OEM Rep:

FESCO Direct LLC
Call +1 (262) 349-9436
Email information@fescodirect.com
Visit online at www.FESCODirect.com

