



Eagle

Stephens

www.stephensmfg.com

TOMPKINSVILLE, KY



Stephens



(800) 626 0200

CEMENT SILO



Stephens Mfg. is a member of the (**Concrete Plant Manufactures Bureau**). Each plant will have a CPMB rating plate to guarantee that it meets the specifications for that size plant.

Standard With
ONE Compartment.

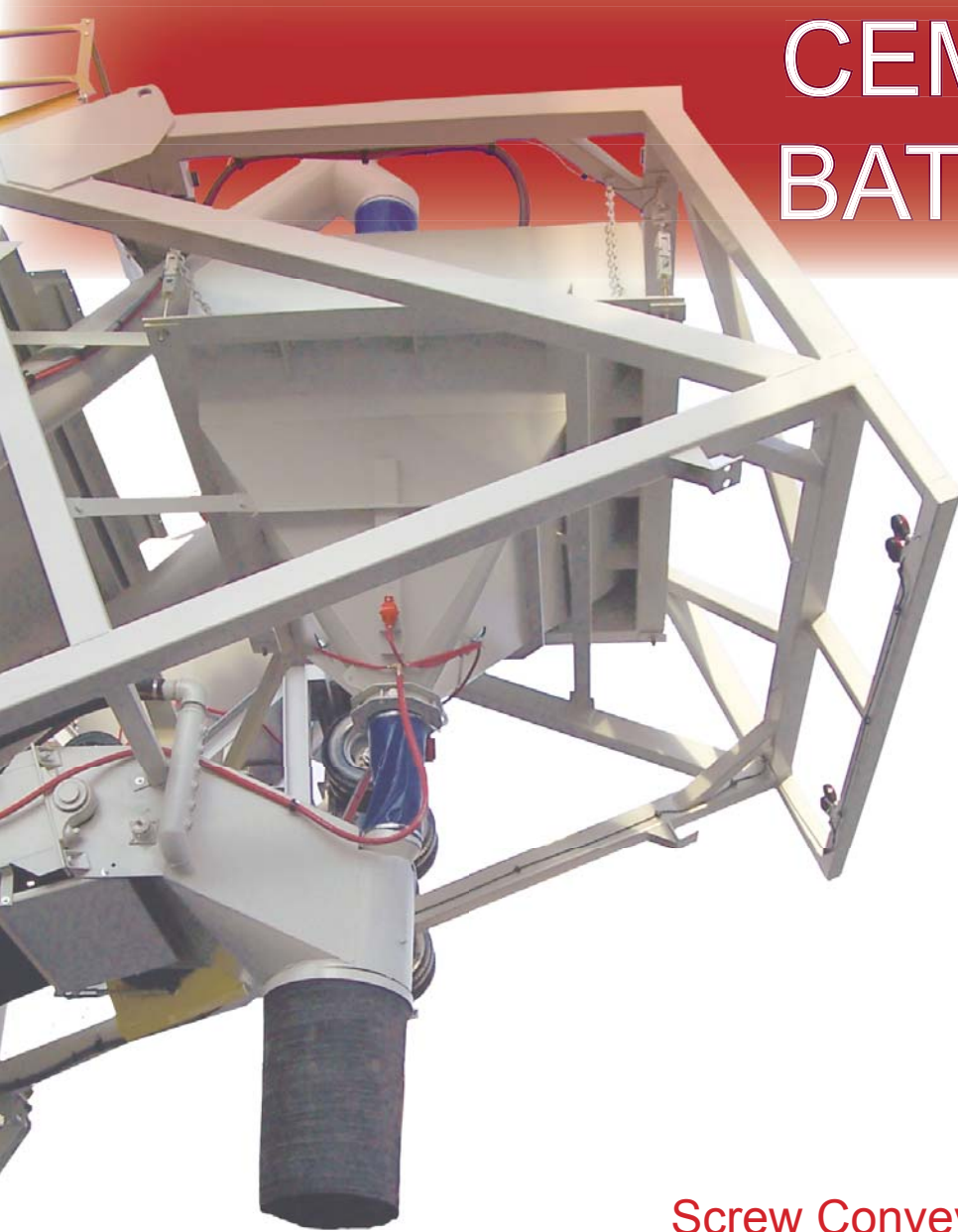
- 1). 1,405 cubic feet - maximum: 350 BBL.
- 2). Safety pressure relief valve with cover mounted on top of silo.
- 3). 4" diameter fill line with camlock coupling.
- 4). Aeration pads in cone with electric solenoid. (aeration blower recommended).
- 5). Moisture - Filter - regulator unit with pressure gauge.
- 6). Inspection hatch on top of silo.
- 7). Cleanout hatches located above screw conveyors for inspection and cleaning out. Emergency slide gates on cones of silo.
- 8). Outside ladder and safety CAGE, with toe board and pipe handrails around top of silo
- 9). SV- 170 Filter Vent (170 Sq. Ft. cloth) and timer switch controls with wiring in liquid tight flexible metallic conduit from filter vent on top of silo to junction box on plant power panel. Internal electric shaker cleaning device, with HP single phase motor.
- 10.) One (1) low level bin level indicator with lighted signal in control box, wired in liquid tight metallic flex conduit.

- 1). 2,000 cubic feet - maximum: 500 BBL, or 3,200 cubic feet maximum 800 BBL
- 2). Two (2) safety pressure relief valves with covers mounted on top of silo.
- 3). Two (2) 4" diameter fill lines with camlock couplings.
- 4). Aeration pads in each cone with electric solenoid. (aeration blower recommended).
- 5). Two (2) Moisture - Filter - regulator units with pressure gauges.
- 6). Two (2) Inspection hatches on top of silo.
- 7). Cleanout hatches located above screw conveyors for inspection and cleaning out. Emergency slide gates on cones of silo.
- 8). Outside ladder and approved safety CAGE, with toe board and pipe handrails around top of silo.
- 9). Two (2) SV- 170 Filter Vents (170 Sq. Ft. cloth) and timer switch controls with wiring in liquid tight flexible metallic conduit from filter vents on top of silo to junction box on plant power panel. Internal electric shaker cleaning device, with HP single phase motors.
- 10). Two (2) low level bin level indicators with lighted signals in control box, wired in liquid tight metallic flex conduit.

Optional:
Two Compartment Silo

optional : Dust collectors and silo overflow available

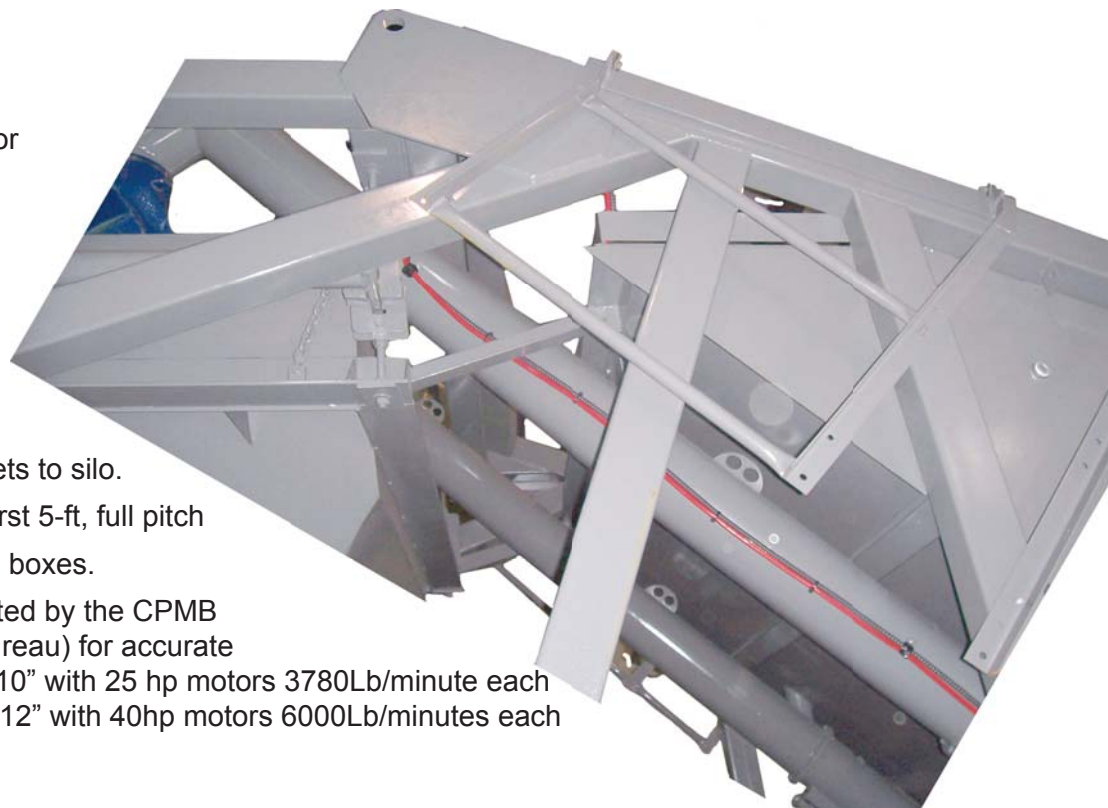
CEMENT BATCHER



- 1). **12 Yard cement batcher** 140 cu ft with 10,000 LB lever systems, one "S" type load cell (100' cable). 0 - 10 VDC digital readout, with inching gate on batcher and inspection hatch on top of batcher.
- 2). **10" butterfly valve.**
- 3). 3 - ¼ air cylinder with electric solenoid mounted on power panel. Includes florestrictors mounted in solenoid.
- 4). Turbine type air vibrator with electric solenoid.
- 5). Two aeration pads in cone of cement batcher with electric solenoid.
- 6). **Cement is gravity fed into truck.**
- 7). **Hanger lugs for hanging test weights, with safety chains to secure batcher**
Optional: Limit Switch Batcher Vents Available

- 1). **Two (2) 10" diameters screws.** 2835 Lb/minute each
- 2). Two (2) 20HP 3 phase TEFC motors 230/460 volts, with magnetic starter. Wired from motor to starters in liquid tight flexible metallic conduit. ***With reducer, direct drive, (screw rpm will not be adjustable).***
- 3). Rubberized flumes for screw discharge.
- 4). Mounting plates, boots, and gaskets to silo.
- 5). 10" diameter—2/3 pitch flighting first 5-ft, full pitch remainder, center hanger bearing boxes.
- 6). Stephens screw conveyors are rated by the CPMB (Concrete Plant Manufacturers Bureau) for accurate discharge rates. **Optional:** Screws 10" with 25 hp motors 3780Lb/minute each
12" with 40hp motors 6000Lb/minutes each

Screw Conveyor: Standard



Aggregate Batcher



- 1). 12 yard with 40,000 Lbs lever system with one "s" type load cell and 0-10 VDC digital readout. 580-cubic feet capacity at water level.
- 2). **Constructed of 1/4" steel in sloping sides.**
- 3). Two discharge openings in batcher with one (1) extra long double acting clamshell gates, under both openings. **Gear type** gate with (6) 3/4" teeth per gate. Gate has **permanently lubricated bronze bushing.** Gate will be actuated by two 4" air cylinders, with flo-restrictors mounted in two (2) solenoids.
- 4). **Two** turbine type air vibrators with electric solenoid.
- 5). Filter—regulator—lubricator unit for solenoids and air cylinders. Unit is mounted by solenoid bank on power panel.
- 6). **Hanger lugs for handling test weights.**

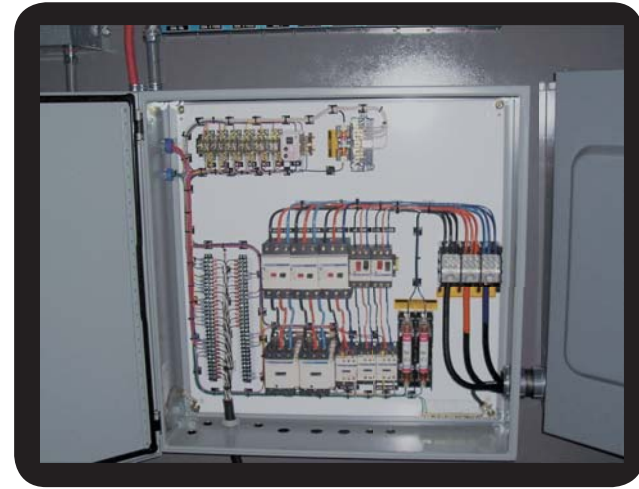
Optional: Limit Switches and A/R liners available

Conveyor & Electrical System



- 1). 30" x 44'6" channel frame transfer conveyor (30" conveyor belting with 3/16" x 1/16" conveyors, 220 #PIW).
- 2). Stephens "titan" belt wiper replaceable poly-urethane blade and tail pulley guard.
- 3). 20HP 3 phase TEFC motor 230/460 volts.
- 4). Shaft mounted gear reducer—346 F.P.M./632 T.P.H. back stop in reducer to prevent belt roll back, with OSHA approved guards.
- 5). 12" diameter rubber lagged head pulley with 2-7/16" bearing.
- 6). Truck collection hopper with 24" diameter opening with rubber discharge boot. Water inlet pipe with six (6) admixture inlets. Constructed of 1/4" steel with 1/4" a/r (brinnell 400). Two sides have "bolt in" replaceable liners.
- 7). 35 degree troughing idlers 4" diameter rolls with sealed bearing. Placed on 4' centers with extra idlers at charging point under gate. Steel shields over return idlers.
- 8). Self cleaning tail pulley with 12" screw type take ups, with safety guard around tail pulley.
- 9). Skirt board around loading point on belt. Lined with 1/2" rubber skirting material.
- 10). Stephens's conveyors are rated by the CPMB (Concrete Plant Manufacturers Bureau) for accurate discharge rates.
optional: 36" belt and Vulcanized belts available.

Electrical Systems



- 1). **Plant power panel: 200 AMP** Main disconnect mounted on steel panel with protective top cover and lockable doors
Junction box with pre-wired terminal strips for connections to electric solenoids. Electrical wiring from all motors to starters wired in liquid tight flexible metallic conduit. Each motor is individually protected. Power panel is mounted on aggregate batcher section, away from moving conveyor components. Panel will be third party UL approved when it leaves the factory.

Voltage

460 volts 3 phase with maximum of a 200 AMP disconnect

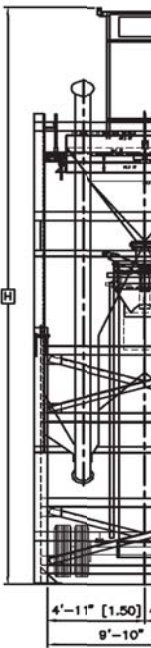
If 230 volts 3 phase single phase or large disconnect desired, please consult factory.

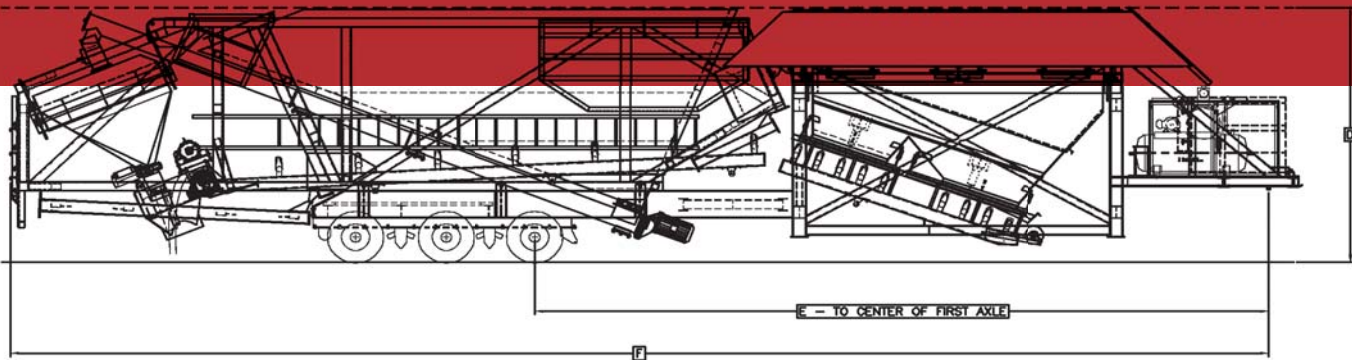
- 2). Magnetic starter for transfer conveyor wired from motor to starter. Starter mounted in plant power panel. Wired with liquid tight flexible metallic conduit.
- 3). Push button control box: control panel includes all necessary push button controls for Stephens Mfg. supplied equipment. If controls are required for existing equipment or equipment from other manufacturers, please consult factory. Push button control box includes 50' of control cable from power panel to 110-volt control box with plug in receptacle. **Note: All controls 110V.**
Optional: 400 and 600 AMP Disconnect

AGGREGATE STORAGE BINS

- 1). 1400Cu.Ft. 70 ton—51 cubic yards—3 compartment overhead storage bins.
- 2). Constructed of ¼" steel on sloping sides of gate section, 3/16" remainder.
- 3). 2" Tall bolt on extension legs, to mount between batcher and bins.
- 4). 10 yards of material may be discharged from any two (2) gates. Consult factory if customer wishes to discharge 10 yards of material from front two (2) gates (on four compartment bin consult factory.)
- 5). Hinged fold down sides for easy transportation. (Note: It may be to customer's advantage to have weld up bins to reduce crane and labor charges in the field).
- 6). Two clam gates on each compartment. Gear type gates with (6) ¾" teeth on each gear. Each gate has permanently lubricated bronze bushings.
- 7). 5" diameter air cylinders with electric solenoid. Flo restrictors in both ports of air cylinders.
- 8). Heap plates.
- 9). All air devices plumbed with rubber air hoses.
- 10). Aggregate support structure constructed of steel "structural" beams 70-200 tons W8 x 31#. Optional: A 4th Compartment and up to 200 ton capacities and A/R liners.

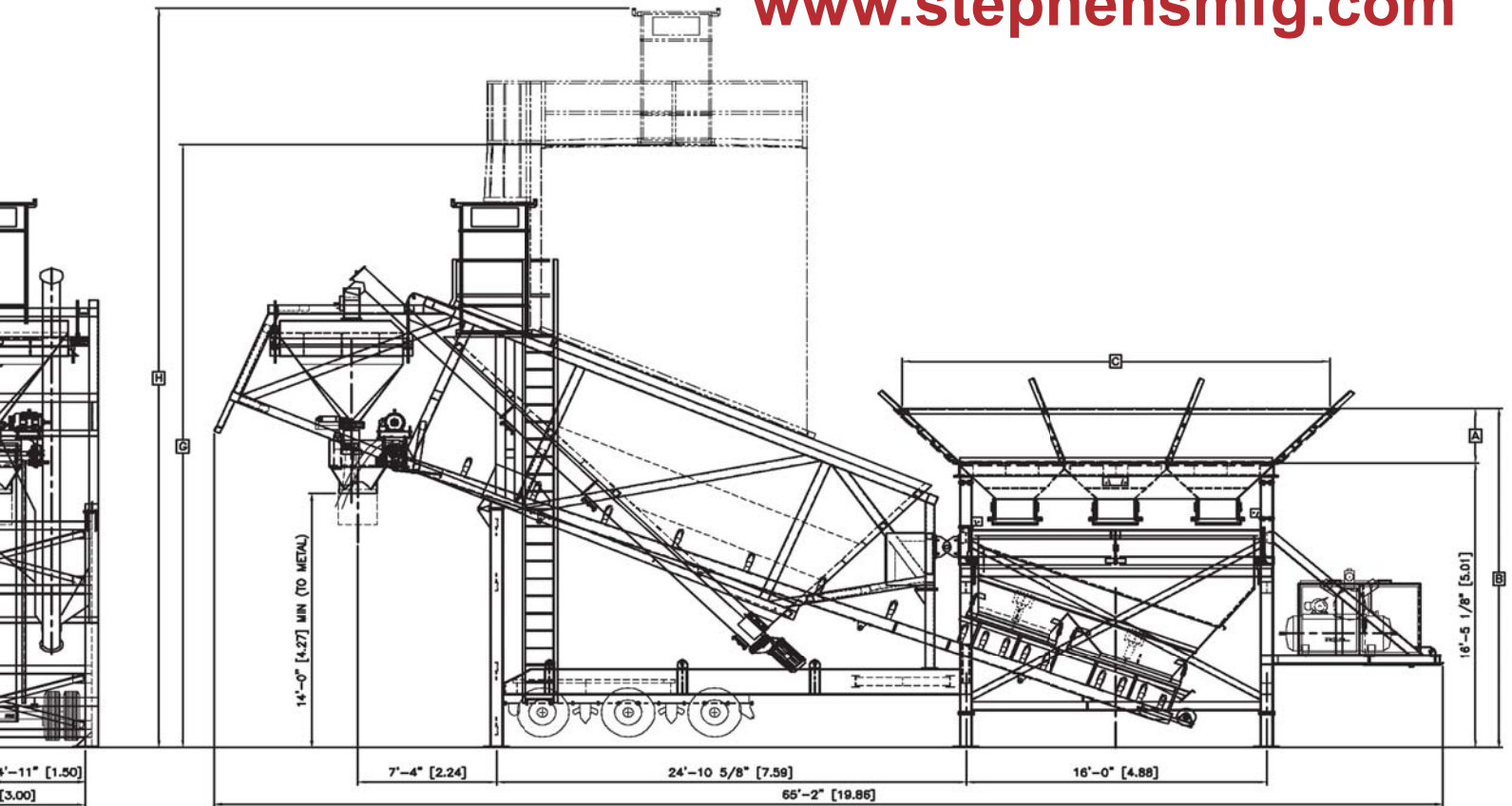
PHONE: 800-626-0200





EAGLE MOBILE - TOWING POSITION

www.stephensmfg.com



70 TON - 200 TON

EAGLE MOBILE CONCRETE PLANT DIMENSIONS CHART

DESCRIPTION	UNITS	A	B	C	D	E	F	G	H	CAPACITIES CU YARDS CU METERS
70 TON AGG. BIN	STD.	3'-1 1/2"	19'-6 5/8"	22'-8 3/4"	14'-0"	---	---	---	---	51.85
	METRIC	.95 M	5.96 M	6.93 M	4.27 M	---	---	---	---	39.6
100 TON AGG. BIN	STD.	5'-1 1/2"	21'-6 5/8"	26'-8 3/4"	14'-0"	---	---	---	---	74.07
	METRIC	1.56 M	6.57 M	8.15 M	4.27 M	---	---	---	---	56.0
120 TON AGG. BIN	STD.	6'-1 1/2"	22'-6 5/8"	28'-8 3/4"	14'-0"	---	---	---	---	88.8
	METRIC	1.85 M	6.87 M	8.76 M	4.27 M	---	---	---	---	67.8
150 TON AGG. BIN	STD.	8'-2"	24'-7 1/8"	28'-0"	14'-0"	---	---	---	---	111.11
	METRIC	2.49 M	7.50 M	8.53 M	4.27 M	---	---	---	---	84.9
200 TON AGG. BIN	STD.	11'-4"	27'-9 1/8"	28'-0"	14'-0"	---	---	---	---	148.1
	METRIC	3.45 M	8.46 M	8.53 M	4.27 M	---	---	---	---	113.2
350 BARREL CEM. SILO	STD.	---	---	---	---	36'-11 3/8"	63'-4 7/8"	23'-8"	31'-6 3/4"	51.85
	METRIC	---	---	---	---	11.26 M	19.33 M	7.21 M	9.62 M	39.64
500 BARREL CEM. SILO	STD.	---	---	---	---	36'-11 3/8"	63'-4 7/8"	26'-2"	34'-0 1/4"	74.07
	METRIC	---	---	---	---	11.26 M	19.33 M	7.98 M	10.37 M	56.63
800 BARREL CEM. SILO	STD.	---	---	---	---	36'-11 3/8"	63'-4 7/8"	34'-9 1/4"	42'-7 1/2"	118.52
	METRIC	---	---	---	---	11.26 M	19.33 M	10.6 M	12.99 M	90.62

NOTE: TO CONTINUALLY UPDATE AND IMPROVE OUR PRODUCT WE RESERVE THE RIGHT TO AMMEND OUR STANDARD SPECIFICATIONS WITHOUT NOTICE.



STEPHENS MFG.

PO. BOX 488,
TOMPKINSVILLE , KY 42167
PHONE: 800-626-0200

OUTSIDE the USA 270-487-6774

FAX: 270-487-8368

www.stephensmfg.com



Made in the USA.

Proud Members of:

