

TempTron

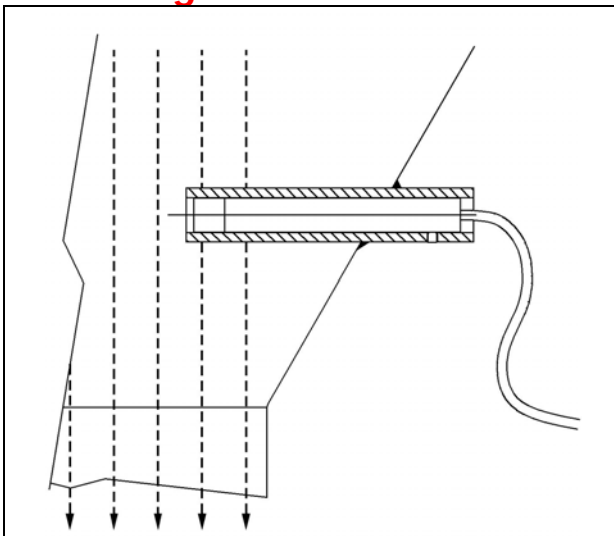
THE TOUGH AND RELIABLE TEMPERATURE SENSOR

TempTron meets the need for temperature monitoring in concrete, asphalt and similar plants where normal sensors just do not last. **TempTron** has built-in electronics, allowing it to transmit temperature readings for long distances with its 2-wire analog connection. Its standard process-control output matches PLC and computer inputs to allow simple setup of both indicators and temperature control systems.

- Rugged Stainless steel construction
- Thermally conductive cap allows fast response
- Mounting options to suit bins, silos, conveyors and mixers
- Indication in either Celsius or Fahrenheit
- 0°C – 100°C sensing range (32°F – 212°F)
- Analog 4-20mA output – compatible with most PLC & PC controllers
- Complete kits including both panel-mount and wall-mount or custom multi-indicator displays
- Sensing cap is replaceable
- Meets UL and CE requirements
- North American made, with same-day shipping and local service.

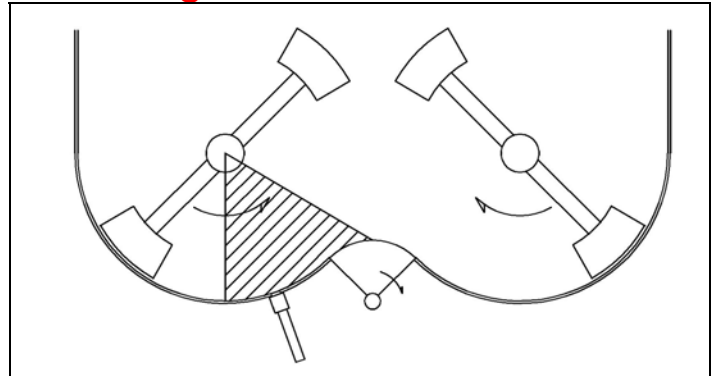


Mounting in bins and silos



To monitor correctly and with fast response, the sensing cap needs to be in the flow region where material is drawn from the vessel. The optional extension tube allows the sensor to be positioned correctly and gives extra protection against wear.

Mounting in concrete mixers



Two options are available for monitoring the temperature of material inside a mixer:

LOWEST WEAR – the sensor is mounted via the optional mixer mount so that the sensing cap is in contact with the underside of a liner plate. Heat conducted through the liner is passed to the sensing cap through heat conductive paste to give accurate temperature indication.

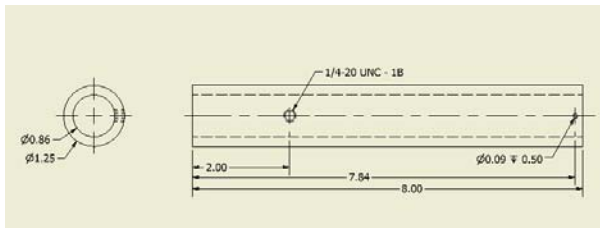
FASTEST RESPONSE – a hole can be cut through the liner plate, allowing the sensing cap to protrude to just below the surface of the liner. This gives the fastest response time but creates some wear of the cap.

Specifications

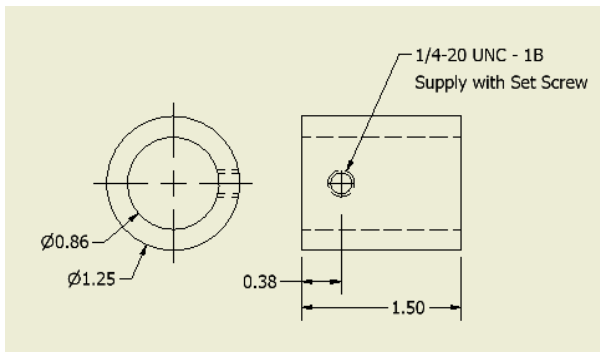
SENSOR

Dimensions:	7/8" x 6-1/2" long w/ 12' cable (22.5mm x 165mm long w/ 3.65m cable)
Probe Material:	Stainless Steel body With brass sensor head
Cable Material:	PVC, 4-conductor
Protection:	NEMA 6P, hermetically sealed
Temp. Range:	-0°C - +100°C 32°F - 212°F
Power:	9 - 32VDC
Accuracy:	± (0.25% / °C + 0.40% of span) With 1-point Calibration ± (0.10% / °C + 0.10% Of calibrated span) With 2-point calibration
Temp. Effects:	= ± (0.005% of reading °C + 0.015°C) / °C
Long term Drift:	≤ 0.1% FS

BIN / SILO MOUNT

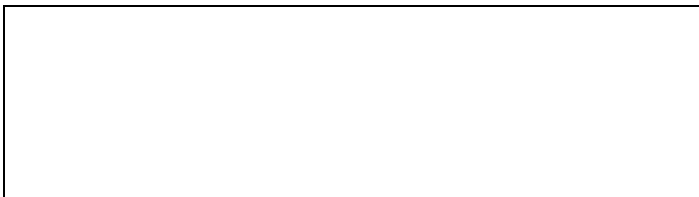


MIXER MOUNT



DIGITAL DISPLAY (PANEL MOUNT)

3 1/2 digit (0-100.0°C or 0-199.9°F), 0.6" LCD digits
Specify °C or °F at time of order. Display also has the
capability for field recalibration.
Loop powered – display and sensor require a source of
DC power



DIGITAL DISPLAY (WALL MOUNT)

As above, mounted in 4" x 4" x 2" (102 x 102 x 51mm)
NEMA-12 (IP52) ABS enclosure.

MULTIPLE DISPLAY CABINETS

Any number of the panel mount displays above can be
supplied in dustproof or waterproof enclosures on
special order. Contact us with your needs.

Temperature control

Scale-Tron designs and installs cooling and heating
systems for aggregates and cements. The
PLC and touch screen aggregate refill controls maintain
a supply of materials in batching and continuous mixing
plants. Controls include variable speed drives for wet
belts to maintain temperatures of materials at an
appropriate level to produce concrete and other
products within specified temperature ranges.
Experience includes plants with production up to 600 cu.
yd. per hour.

Aggregate refill controls

In partnership with our associated companies we can
supply complete aggregate refill systems including
holding hoppers, conveyors, wet belts, re-screening and
sand cooling.

Aggregate, sand and cement cooling systems

Cooling systems to cool the water used in the wet belts,
plus forced-air cooling of cements and sand.



For latest information and video, visit

www.scaletron.com

Email scaletron@scaletron.com or call 1 800 632 7083

Scale-Tron Inc.

e-mail: scaletron@scaletron.com

1-800-632-7083

6428 Trans Canada Highway

St. Laurent, Quebec

Canada, H4T 1X4

tel: +1 514 940 0337